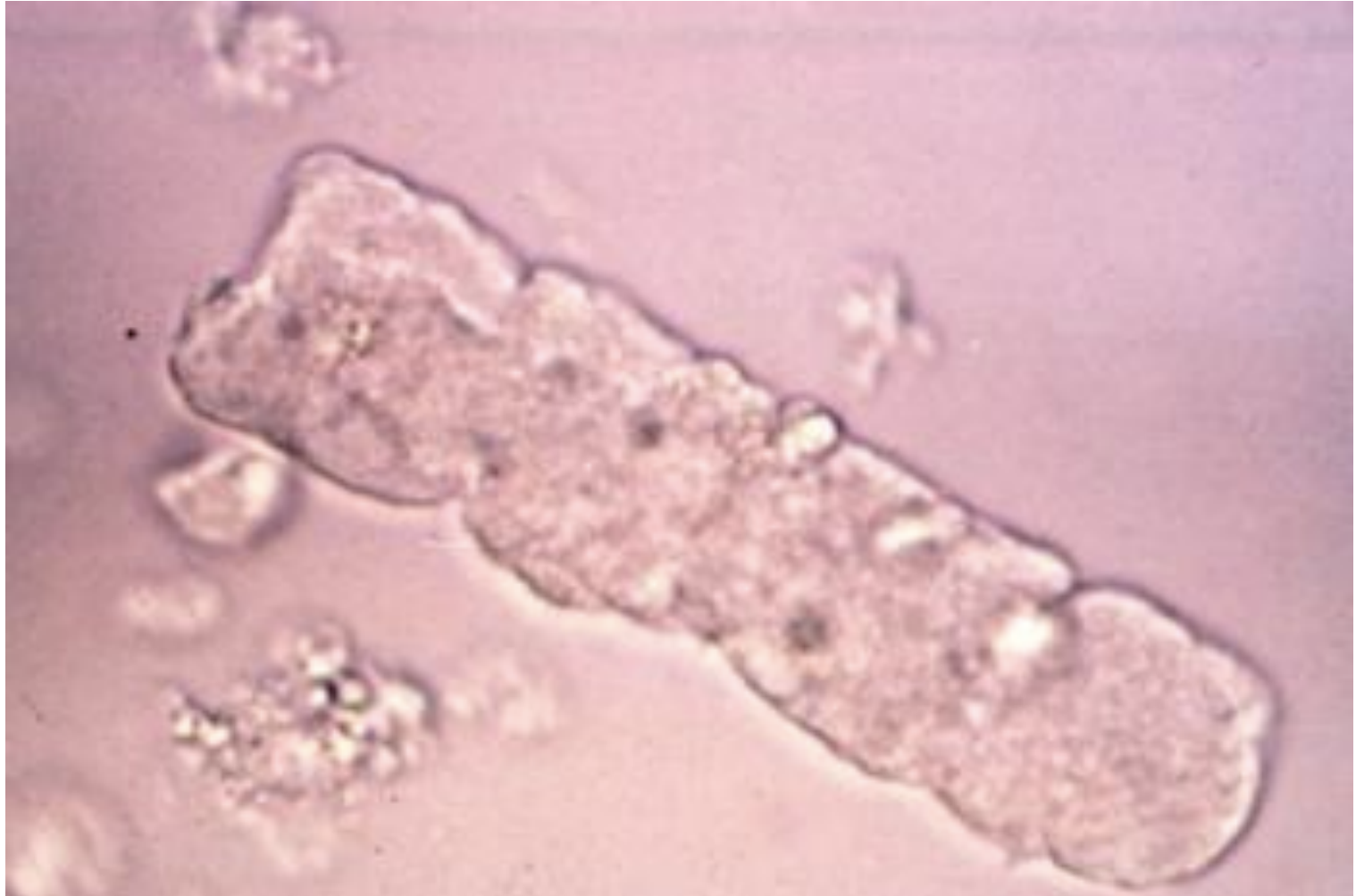
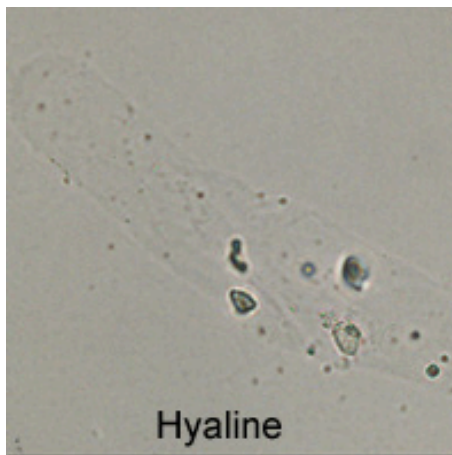


RED BLOOD CELL CAST

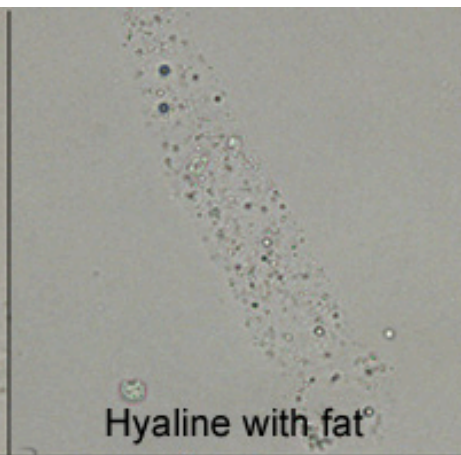


WAXY CAST

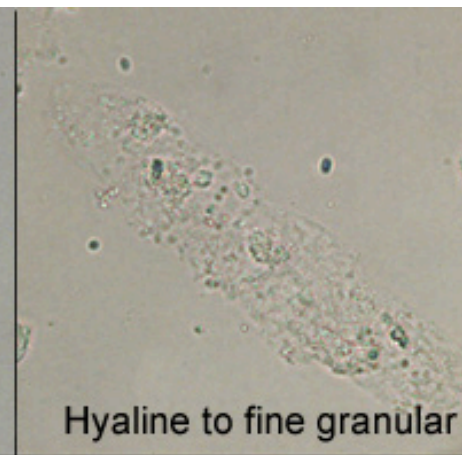




Hyaline



Hyaline with fat



Hyaline to fine granular



Cellular



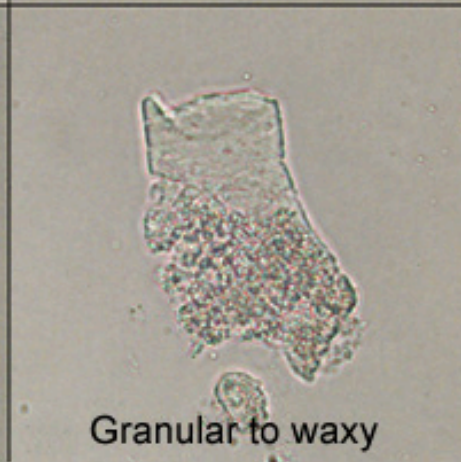
Cellular to coarse granular



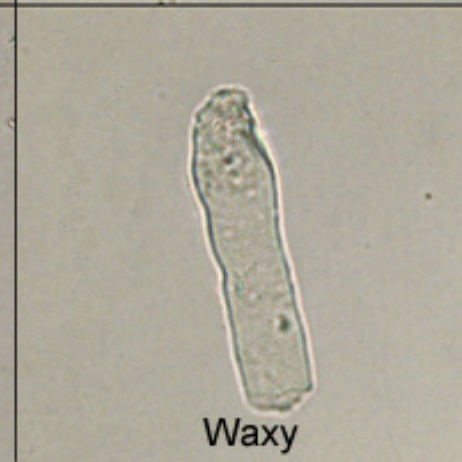
Coarsely granular



Finely granular

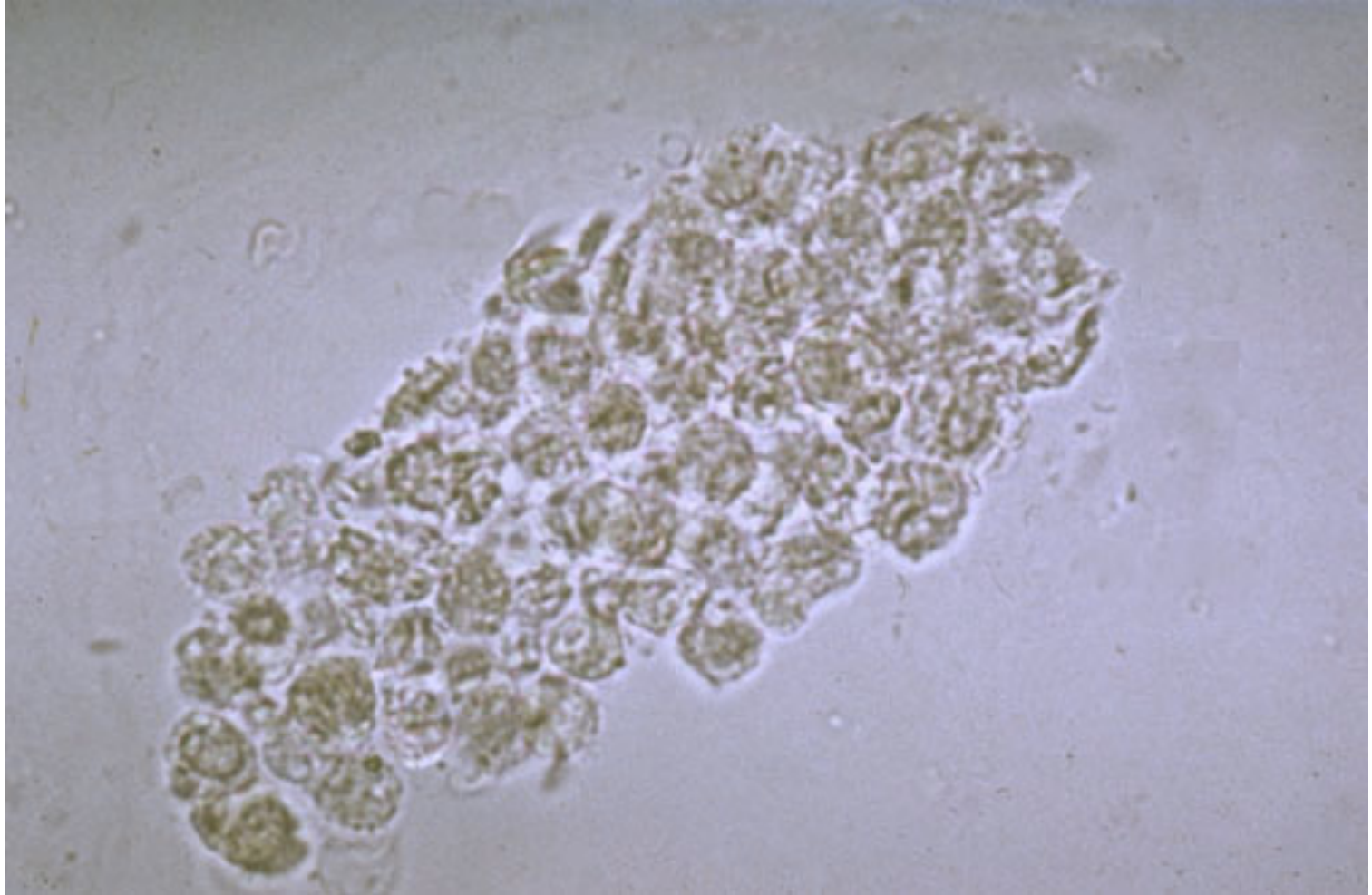


Granular to waxy



Waxy

WHITE BLOOD CELL CAST



GRANULAR/MUDDY BROWN CAST

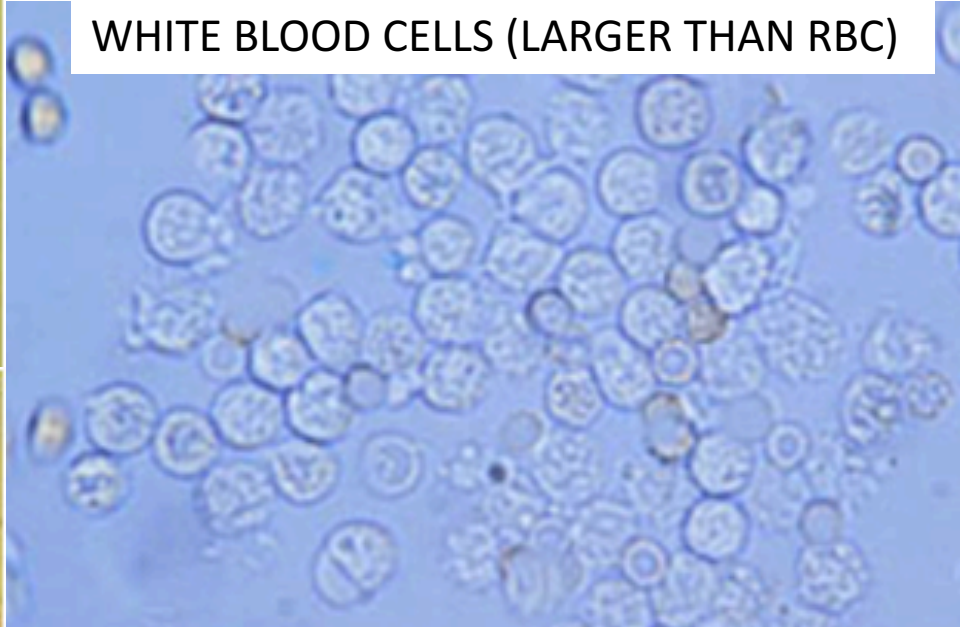


MONOMORPHIC RBC VS DYSMORPHIC RBC VS WBC

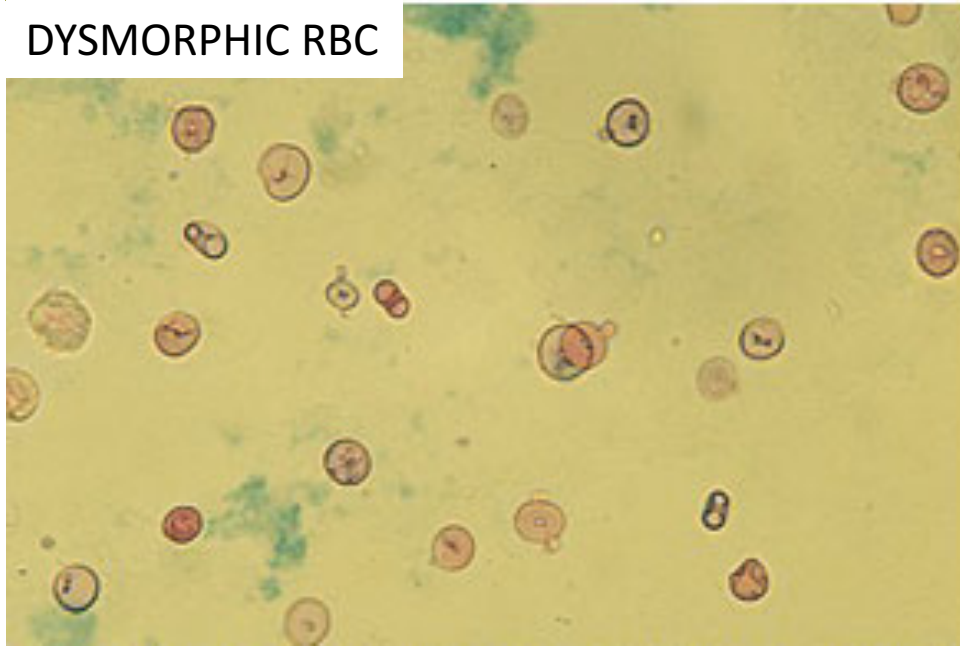
MONOMORPHIC RBC



WHITE BLOOD CELLS (LARGER THAN RBC)



DYSMORPHIC RBC

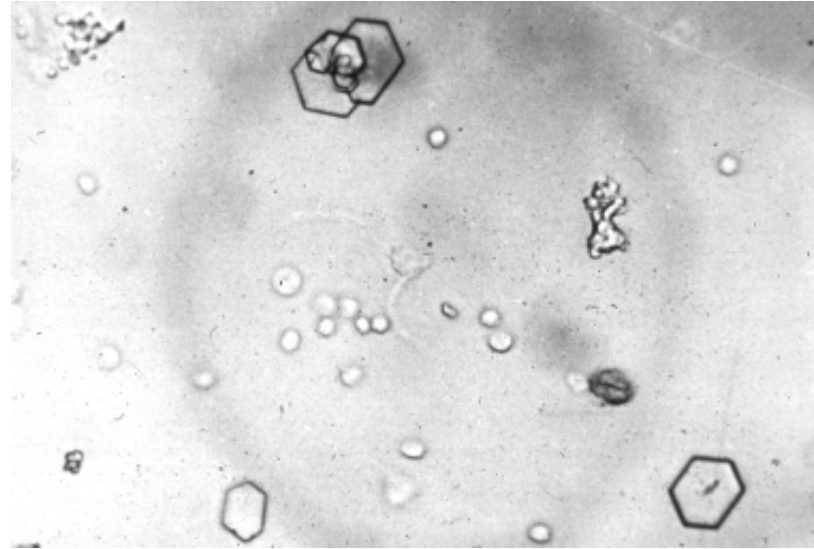


CRYSTALS

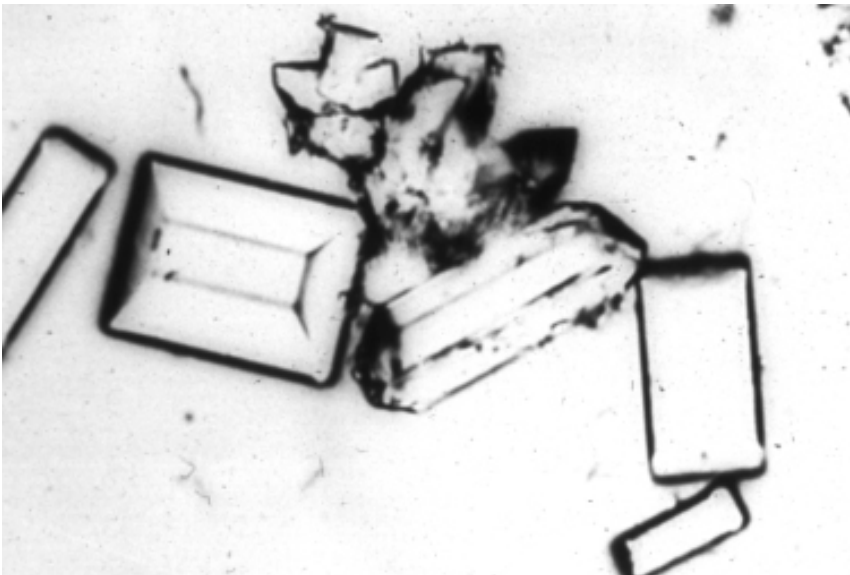
Uric Acid



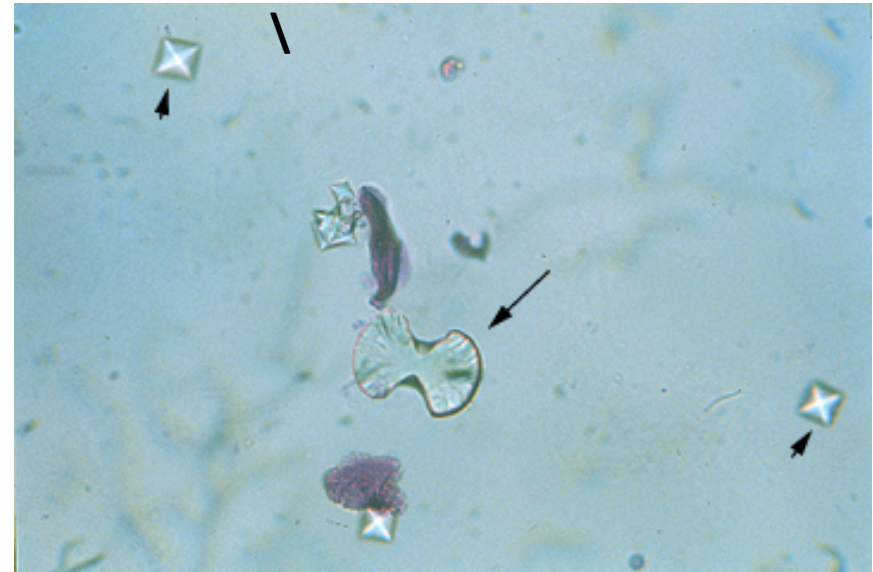
Cystine



Struvite (magnesium ammonium phosphate)



Calcium Oxalate



NORMAL CRYSTALS



Uric Acid



Ca Oxalate



Hippuric



Ca Phosphate



Triple Phosphate



Ca Carbonate

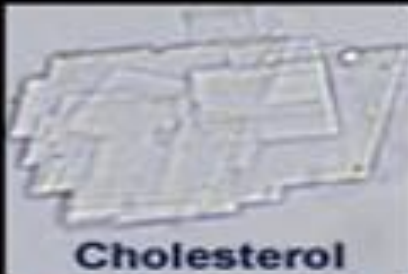


Ammon. Biurate

ABNORMAL CRYSTALS



Bilirubin



Cholesterol



Cystine



Leucine



Tyrosine



Sulfa



Acyclovir



Indinavir

FATTY CAST/OVAL FAT BODY



EPITHELIAL CELLS

